



Unleashes the Power of

**Oracle's® JD Edwards
EnterpriseOne**

for a **Simple & Robust**

**Utility Customer Service &
Billing Solution**

- Electric Power
- Gas
- Cable
- Internet
- Water
- Sewer
- Trash
- Special Services
- & more...



Power of Oracle – JD Edwards – QI Systems

We're not going to try and over simplify the process of selecting and implementing a complete, flexible, and robust enterprise utility customer service and billing solution - but we will because we can. Oracle® powered by Oracle. JD Edwards® EnterpriseOne™ powered by JD Edwards EnterpriseOne. It doesn't get any simpler than this.



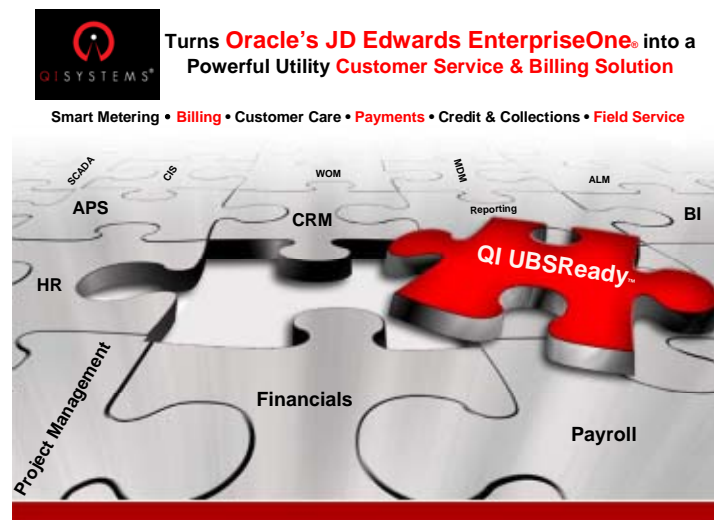
"Because we developed QI UBSReady™ using the JD Edwards EnterpriseOne Toolset, and because we are using existing modules and components already offered in EnterpriseOne, we were able to shave approximately 12 months off of our development time. This allowed us to be able to deliver our Utility Customer Service and Billing Solution to market much earlier than originally expected." – Donnie Law, President, QI Systems

*Pareto 80-20 Principle
Rule of Thumb*

Using the EnterpriseOne framework as the basic building block, you can be assured that the system can handle all your billing needs. Using the other standard EnterpriseOne Modules, you can be confident the system is stable and your investment in EnterpriseOne is secure.

If you already own and operate Oracle's JD Edwards EnterpriseOne, then you already have the ability to serve your utility customers with our QI Systems UBSReady™ Customer Service and Billing software solution.

QI Systems 80-20 Principle



The Pareto principle (also known as the 80-20 rule, the law of the vital few, and the principle of factor sparsity) states that, for many events, roughly 80% of the effects come from 20% of the causes. The same rule of thumb holds true with The QI 80-20 Concept. You see, QI Systems is the 20% of the efficiencies your current JD Edwards EnterpriseOne system is missing. We give you the missing pieces of the puzzle that makes EnterpriseOne **Utility Billing Solution Ready**

(UBSReady™) without having to change your current infrastructure or integrate outside software solutions.

By adding the 20% needed to be a true utility billing solution, QI Systems unleashes the power of EnterpriseOne to generate 100% of what's required by a utility to complete the full customer service cycle and transform JD Edwards into a powerful and robust billing solution. We do this in two ways.

If you know JD Edwards EnterpriseOne®, then you know QI Systems UBSReady™

- **Empower Oracle's JD Edwards EnterpriseOne:** We tap into the unused or underutilized capabilities of your existing enterprise solution. We empower existing EnterpriseOne modules and components to easily manage the entire process of customer service and utility billing.
- **QI Systems' Software technologies:** With our four patent pending and trademarked software technologies we transform EnterpriseOne into a complete utility customer service and billing solution.

Together with QI Systems' UBSReady solution and the integrated suites of Oracle's JD Edwards EnterpriseOne you'll have all you need to provide superior customer service and rapid accurate billing without having to go outside of your existing JD Edwards Environment. This means a huge savings to your utility because you'll be able to run QI UBSReady™ with your existing resources.

Patent Pending Technologies turn existing EnterpriseOne modules into a powerful utility billing solution

QI Systems UBSReady Technologies

QI UBSReady was developed with EnterpriseOne utility customers and potential customers in mind. QI UBSReady was built using the JDE Edwards EnterpriseOne Toolset and is supported by EnterpriseOne's existing development standards and security environment. Our technologies take existing EnterpriseOne resources to produce 100% of the effects you need to better serve your utility customers.

- **Flexible Calculation Module (FCM)™**
- **Rate Formula Manager (RFM)™**
- **Formula Extractor Tester (FET)™**
- **QI Driver Program (QI DP)™**



"With some outside consultants, you get a consultant on who is only in it for themselves and not always looking out for the best interest of the company. Albert Bond, now QI Systems Vice President of Client Services, is not that type of consultant. Albert went to great lengths to fully understand our business structure, and he was a critical part of our Systems Development team. As a result, many of the ideas and applications Albert was involved have been very successful. Albert is not afraid to ask the tough questions and even question some of your business practices. But be assured that he is always looking out for your company." – IT Management, MFA Oil



If you are a JD Edwards EnterpriseOne user, Power User, developer, or IT infrastructure specialist, you can easily understand, implement and use QI UBSReady™

Utilizing our technologies we unleash the power of your existing EnterpriseOne modules and components to give you a complete Utility Customer Service and Billing solution. Multi-language capabilities are also available by using your standard EnterpriseOne features and set up.

Because QI Systems built QI UBSReady with the EnterpriseOne Toolset, you'll be positioned to take full advantage of Oracle Fusion Middleware in the future. We'll activate the power of these core modules, the ones that you likely already own and operate.

- Customer Address Book
- Fixed Assets
- Account Receivables
- Account Payables
- Real Estate Management
- Work Order Management
- Customer Master

Additional components of EnterpriseOne modules that are also utilized using our innovations.

- Credit and Collections
- Receipt Management
- Lease Management
- Contract Management
- Security Deposit Management
- QI KPA™ Key Performance Analytics Reports and Distribution
- EnterpriseOne Electronic Commerce
- QI eBill™ with Oracle BI Publisher™
- QI CIQ™ Customer Self Service Intelligence
- QI eDoc™ eDelivery of letters, sales, marketing, notices, alerts, and more

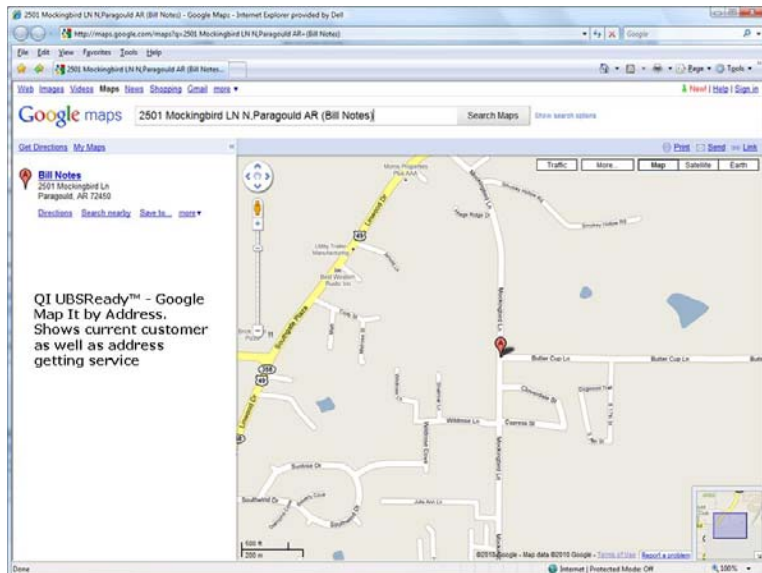
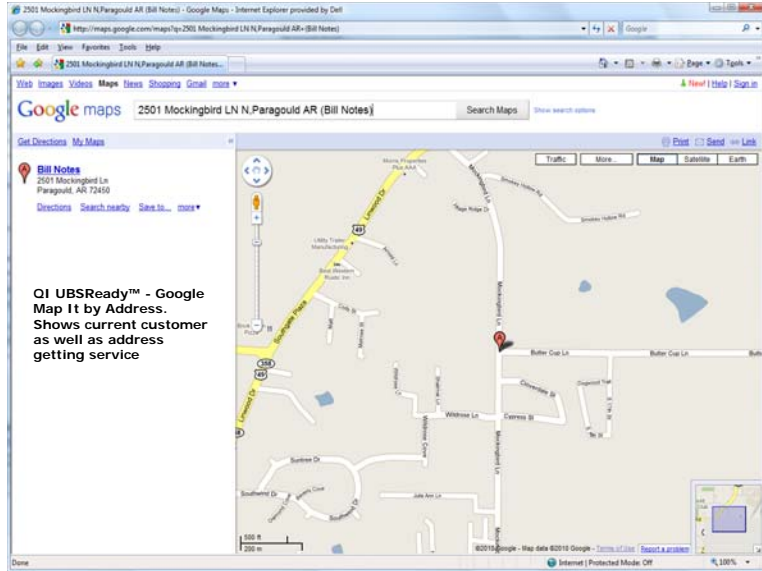
Pre-Built Integrations

Simply click "Map It" from the QI CCC™ and go to the customer's address by address or address by latitude and longitude, or jump over to Google Earth for a bird's eye view, plus much more.

- Google™ Earth
- Google Maps
- Google PowerMeter™ and
- Other utility-based free and shareware software



"Because we use JD Edwards EnterpriseOne core functions and toolset implementation can be handled like any other "Project" within Edwards' OMW. Set tables and a robust data dictionary already exist; and with our technologies combining we can turn your EnterpriseOne into a flexible, robust, powerful, yet easy-to-use utility customer service and billing solution." – Albert Bond, Vice President of Client Services, QI Systems



Smart Grid and Smart Metering



QI UBSReady™ is SMART Grid and Metering Ready – called QI IQGM™. As long as you can access the Grid and have SMART meters in place, we can take advantage of these new technologies and help you and your customers increase their meter IQ. Our Smart Rate Management and Billing modules allow for all or a segment of your customers to be billed at different rates at different times of the day or season whether you're a regulated or unregulated utility. What used to be available through more expensive software solutions and for only large commercial accounts is now available through QI IQGM.



"I have worked with Quality Innovation Systems, Inc. on two projects over the last year and a half here at Limited Brands. Thanks to QI Systems dedication both projects were successful. QI Systems™ is the best JD Edwards® consultant I have worked with. They are extremely knowledgeable about the many versions of both Oracle's® JD Edwards' World® and EnterpriseOne® systems and is able to quickly grasp custom processes and coding as well. QI Systems® is able to work independently and produces quality results. QI Systems is my first choice whenever JD Edwards consultants are needed." -
Steve Maddox, Senior Programmer Analyst

QI IQGM™ provides flexible meter reading and read management with integration to various reading devices with the capability of mass meter read entry if needed.

- Unbundled billing
- Billing by intervals or seasons
- Rate adjustment by customer type, intervals and seasons
- Demand Forecasting

What makes QI IQGM so smart is that we tie all this information back into our green-friendly QI KPA™ module for instant or periodic reporting of key performance indicators and customized analytics. By making you and your customers smarter we can help you comply with the ever-changing dynamics of both regulated and unregulated energy markets.

Billing & eFunctions

We offer a robust solution with function enhancements to handle all utility billing requirements, including many "green friendly" features.

- Wholesale Billing
- Unlimited Service Codes
- Consolidated Bills
- Revenue Assurance
- Complex Billing
- Real-Time Quotation
- E1 Electronic Commerce
- QI eBill™ with Oracle BI Publisher™
- QI CIQ™ Customer Self Service Intelligence
- QI eDoc™ eDelivery of letters, sales, marketing, notices, alerts, and more

Rate Management

Traditionally Rate Management is a huge burden on a utility and its limited resources. Reason – changes to rate structure initiated by either the regulatory agencies or simply self-made changes based on good business practices usually require the use of IT resources or subcontracted consultants from your utility billing software provider. This can lead to delays, errors, reprogramming, recoding, and retraining just to meet the new standard. Obviously this takes time and time as we know is money.

QI FCM™ helps Power Users make rate changes and complex formula changes quick and easy

So what if you had the capability to make rate changes in minutes not weeks? What would it mean to your utility if you no longer had to rely on the IT department or consultants to make these changes? What if your power users now had the ability to make rate changes? Just think what this capability would do to your organizations bottom-line.

QI UBSReady™'s patent pending and trademarked technology called the Flexible Calculation Module (FCM)™ can give you this powerful and extremely flexible capability. QI FCM puts Rate Management responsibility into the hands of your power users. Power users can now make rate changes "on-the-fly" in minutes, including adding new service codes and complex formulas to help generate more revenue for your utility. Once these changes are made and tested, they are instantly available to all EnterpriseOne components affected to ensure accurate billing and system integrity.

User Adoption

QI UBSReady™ looks and feels just like Oracle's JD Edwards EnterpriseOne. That's why user adoption rates are high. Power Users can easily train and manage other users, especially those CSR's who are on the customer service front line, by using our extensive Wizards and self embedding pop up training videos.



QI CCC™ provides the CSR with one screen in a multi grid format to handle all customer service needs

For example, our proven training process instantly saves your utility precious time and thousands of dollars in new CSR and IT training. Complete training can be done in hours rather than days or weeks. Group, individual or self-service training and knowledge enhancement are all available options through the use of our methods.

Along with our Wizards and pop up training videos we offer a complete set of soft and hard documentation for all users in all situations, including customized business processes.

Customer Service Representatives (CSR) work from a single screen laid out in a simple, easy to follow multi Grid Format. Just think, having 95% of a CSR's daily customer service activities conducted on one screen all using EnterpriseOne business functions easily mapped through an API. The QI Configurable Customer Control Center (QI CCC)™ gives each CSR all they need to quickly and accurately handle all customer inquiries.

- Account set-up, disconnects, account closures, and reconnects
- Vital Customer Relationship Information

- AR and AP Transaction History
- Customer Services
- “On-the-Fly” Rate Quotation
- Security Deposits
- Account Alerts
- Meter Ready History Data Information
- Work Order and Field Service History
- Outage Reporting
- Forms Management
- Wizards
- Pop up training videos
- Customer and other KPI Reports
- Pre-Built Interface to Google™ Earth, Maps, PowerMeter™, and other free utility-based software and shareware

Key Performance Indicator (KPI) Reporting


“Knowledge is power and responsible power gives you the ability to change and adapt to the dynamics of any marketplace whether involuntarily or voluntarily demanded by the forces upon it.”

Knowing where you’ve been, what you’re doing and where you’re going are three important pieces of information that can determine for your utility’s success or failure. QI UBSReady™ provides access to any and all vital information within JD Edwards EnterpriseOne™ using both Oracle’s BI Publisher™ and QI KPA™. Being able to present this information to the right people at the right time in the right format is the foundation to the knowledge base of your utility. Armed with this information all levels of management and staff, even the lonely CSR on the front line, can make quick, objective, and informed decisions.

EnterpriseOne already provides pre-built industry and business process reporting. Using EnterpriseOne Reporting, BI Publisher™ and QI KPA™ your users will have access to information to generate –

- Bill Presentation,
- Standard Reports,
- Customized Reports and
- Business Intelligence Analytics.

These user interface tools present KPI and QI KPA reporting through green-friendly soft copies distributed via email, or through various graphical metaphors or tabular reports. Reports can be provided in real-time or periodically each defined by the user or user group - customer usage, utility revenue, bad debt/late payments, meter read accuracy, new customers, number of discounts, and many more key organizational metrics are available. Not knowing is no longer an excuse for not knowing.



Enhanced KPI reporting will help all levels of employees to stay ahead of customer demands, changing market dynamics, maneuver through evolving and emerging regulatory environments, and eliminate operational inefficiencies as they are identified.

Implementation Process

*If you have JD Edwards then
you can run QI Systems™*

Since you have already implemented JD Edwards EnterpriseOne™, implementing QI UBSReady™ will be simple, easy, and quick. In fact, we're so confident in this statement that we'll guarantee it. Because we are so closely tied to EnterpriseOne and the fact our QI UBSReady implementation methodology is simply as easy as any other "promotion of an EnterpriseOne Project (OMW)" we'll guarantee a complete implementation within 90 days or less, fixed bid.¹ No complicated integrations, no quirky database mapping or conversions, no new infrastructure or environments, no new hardware, no changes to data bases, no need for personnel changes or hiring, no large implementation teams, and no new technical training for IT.

If you know JD Edwards then you already know QI Systems™.

Technical Specifications

Here's the beauty of QI UBSReady™. We don't require you to change or add anything to your existing infrastructure or environment provided you already have everything needed to utilize our QI technologies within your existing JD Edwards EnterpriseOne solution.

Pricing

We'll work to meet your budget needs and cycles. We know in today's environment it is hard to get the dollars needed to make even the smallest of changes to your enterprise software investments. So that's why we're willing to provide payment plans as well as fix bid flat rate pricing to qualified JD Edwards EnterpriseOne customers.

¹ 90 day implementation guarantee may vary depending on each individual customer's requirements.



About QI Systems

QI Systems®, Inc. (QIS) headquarters and software development office is in Paragould, AR, with an international sales office located in Salt Lake City, UT and a Global Client Services office located in Dallas, TX. We have been in business for 12 years and are an Oracle® Gold ISV Partner. QI Systems' executive management team has over sixty years of combined experience with JD Edwards World and EnterpriseOne development, sales, consulting, implementations and migrations.

QI Systems offers a new breakthrough system called QI UBSReady™, meaning QI Systems will "Utility Billing Ready your JD Edwards EnterpriseOne". The system is designed to meet the current and future needs of JD Edwards EnterpriseOne utility customers who are seeking to improve their customer service and billing processes, procedures, and overall green friendly key performance indicators (KPIs) reporting. QI Systems offers solutions for Oracle utility customers already using JD Edwards EnterpriseOne, JD Edwards World customers looking to migrate to it, or other small to mid-size municipal utilities considering the purchase of JD Edwards EnterpriseOne as their core enterprise system.

What makes the QI UBSReady System different from its competition is that it is uniquely built with the Flexible Calculation Module™ (QI FCM™), a trademarked and patent pending technology developed by QI Systems. QI FCM allows a JD Edwards EnterpriseOne customer to leverage their existing core modules and turns their JD Edwards EnterpriseOne investment into a powerful utility Billing System. QI UBSReady contains a group of rich feature and function elements - such as Smart Metering and interfaces to Google™ Earth, Maps and their PowerMeter™ software - that are usually found only in more complex and more expensive alternatives.

To learn more about QI Systems' Utility Customer Service and Billing Software call 1-866-264-9157, email qi@qisystems.net, or visit their website at www.qisystems.net.

Trademarks

QI, QI Systems, Flexible Calculation Module, QI FCM, and UBSReady are trademarks of Quality Innovative Systems, Inc. Oracle and Java are registered trademarks of Oracle and/or its affiliates. Google Earth, Maps and PowerMeter are trademarks of Google Inc.